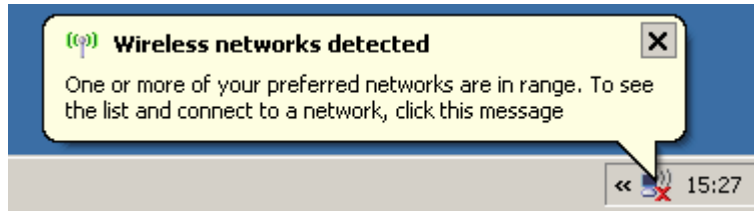
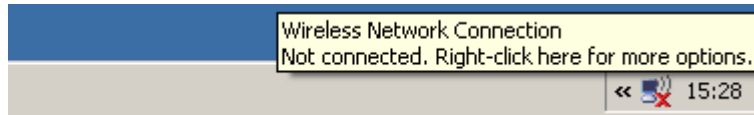


# Wi-Fi Internet access at Wareham Forest

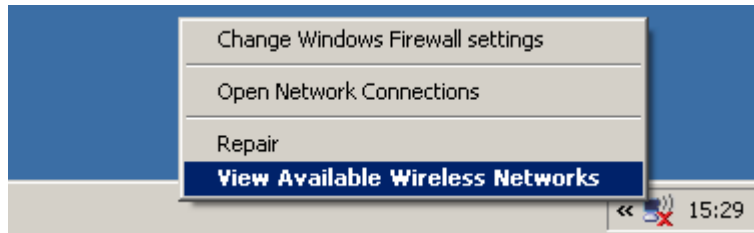
To enable our guests to stay in touch we have installed a high speed Wi-Fi network. Setup instructions for your laptop are below;



When you switch on your laptop it should see there is a Wireless network



Right click on the "Computer" icon with the red X

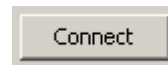


Click on "View Available Wireless Networks"



Click on Wareham Forest

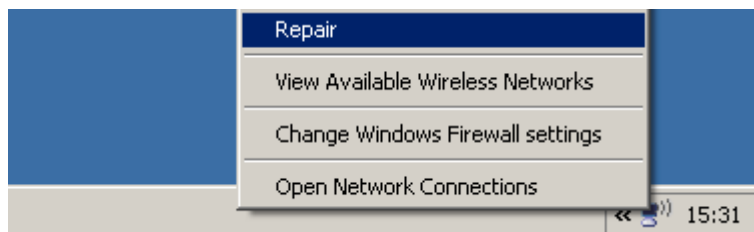
then click



By your clock you will see a "Computer" icon it will flash blue when data is transferred

When you open your browser you will now see the Wareham Forest log-on page. Enter your user name and password to surf the web. Some browser pop-up blockers interfere with the log-on process. If you have a problem please turn off your pop-up blocker for the log-on process.

## Troubleshooting tip



If you have a connection problem, right click on the "Computer" icon and click "Repair"